



OUR MISSION IS TO BUILD A FINANCIALLY STABLE COMMUNITY BY PROVIDING EDUCATION, FOOD, AND NURTURING ACCOUNTABILITY

## SUPPORT BIRCH COMMUNITY SERVICES

**There are hundreds of reasons why a family could be living paycheck to paycheck.**

They could have:

- A decent paying job, but a combination of heavy amounts of consumer debt
- A small income from just entering the workforce or working for a church, nonprofit, or other public servant position
- Transitioned from a two-income household to a one-income household because of divorce or simply rising childcare costs
- Graduated from college with a mountain of debt and an entry-level job
- Never received financial education and knowledge about financial discipline

**All these families have one thing in common:  
They are at Birch to STOP living paycheck to paycheck.**

Stopping this cycle involves:

- In-kind donors who supply food and household items to relieve financial stress
- Nurturing and wise BCS staff to walk alongside these families
- Volunteers from the community to share the workload
- Most importantly, the participant family becomes an integral part of BCS through volunteering monthly and paying an \$80/month service fee.

**But, there is another piece of the puzzle, working in the background to make this possible: those who contribute financially.**



Each year, hundreds of families rely on Birch as a hand up, out of financial difficulty. Financial support from people like you makes this possible.

**If these situations resonate with you, would you please consider donating to support the progress our BCS families are making towards financial stability?**

Your gift will benefit every family at Birch Community Services, working their way toward financial stability.

Thank you for being a part of the puzzle.



FROM 1992 TO PRESENT DAY, WE STRIVE TO BE GOOD STEWARDS WITH EVERYTHING THAT WE HAVE BEEN ENTRUSTED.

## FAST FACTS: FINANCIAL DONATIONS

The “Giveaways” Table is accepting donations.

We are currently collecting donations for:

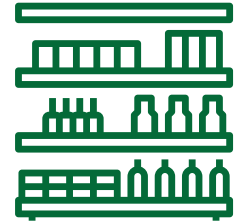
- **A new 26' refrigerated box truck** to replace our tired 2008 truck with over 250,000 miles
- **A new compressor** for our walk-in cooler to be better prepared for the hot summer days
- **Warehouse supplies** such as new racking, shelves, and other supplies. The first \$1,300 will be matched!
- **General operating** expenses to support our families



**A New Truck**



**Cooler Compressor**



**Warehouse Supplies**

Birch Community Services strives to be a good steward with our resources. In 30 years, Birch has:

- Never gone into debt
- Never borrowed money
- Always remained in the black financially
- A committed board of directors, with three original members still serving
- Always believed that people want to help themselves if given the tools to flourish
- Always covered the majority of operating expense through participant service fees.



[BCSI.ORG/DONATE](https://BCSI.ORG/DONATE)